



BalticGrid Project

www.balticgrid.org

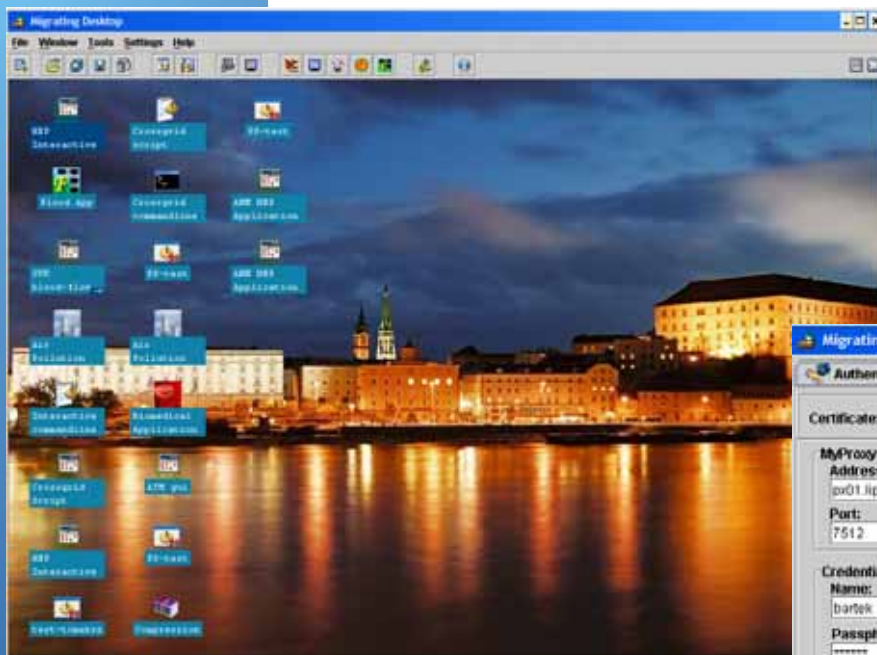
Migrating Desktop Platform

Framework for Grid Applications

The **Migrating Desktop** Platform (MD) is a graphical framework for running grid applications. This intuitive user front-end, similar to window-based operating systems is implemented as an advanced graphical Java-based web application. It allows to access grid resources in an easy and transparent way with special focus on interactive and parallel grid applications. These applications can be both compute and data-intensive, characterised by the interaction with a person in a processing loop.

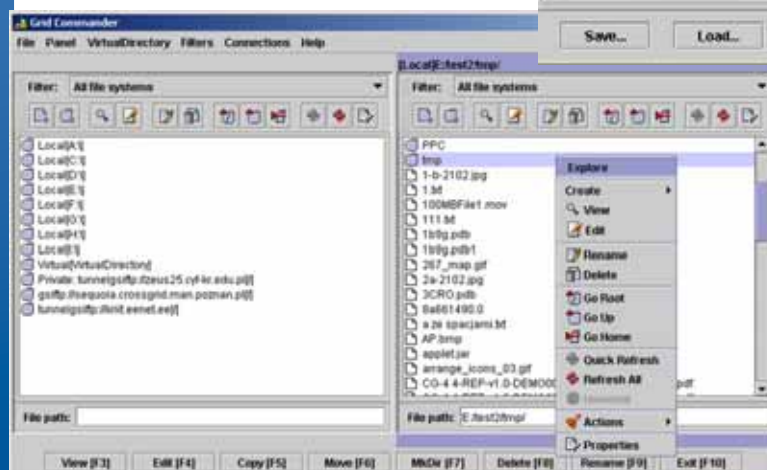


One of the task of the BalticGridG project is to integrate MD with selected BalticGrid applications.



Main features:

- Platform independent
- Support for different Grid infrastructures
- Running sequential and MPI application
- Interactive jobs support
- Easy extendable framework



Migrating Desktop tools:

- Job Wizard
- Job Monitoring
- GridFTP Commander
- Profile Manager
- Applications Container

contract no.: 026715
start date: Nov 1, 2005
duration: 30 months



